

## SafeCom Smart Printing for Lexmark MFPs and printers

SafeCom Go is designed to help companies control and optimize print services and document security. It is easy to install and use, is built with optional modules to match and grow with your business, and is highly configurable to function seamlessly with your company's existing devices, networks and systems.

SafeCom Go integrates secure printing and document accounting on most multifunctional devices and printers.

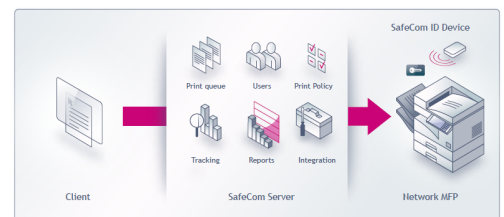
Users enter their identification code directly on the touch screen, or authenticate using access cards and a SafeCom ID reader.

### Smart Printing for your Lexmark

SafeCom Go enables SafeCom Smart Printing functionality that puts you in control of print, copy, scan, fax and email activities and workflows by employing

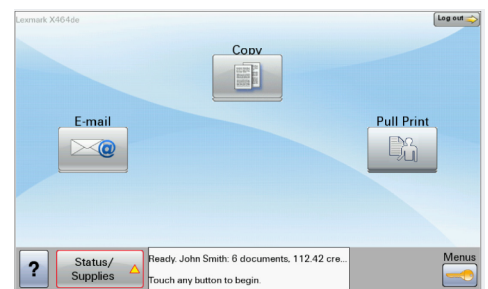
- Central administration
- Document accounting
- Secure printing
- Policy enforcement

### Solution overview



SafeCom Go provides secure printing and access control – users send their print and then authenticate at any SafeCom-enabled network MFP to retrieve it. The SafeCom Server enables central administration, document accounting and policy enforcement. Authentication using cards requires an ID device.

### How it works for the users

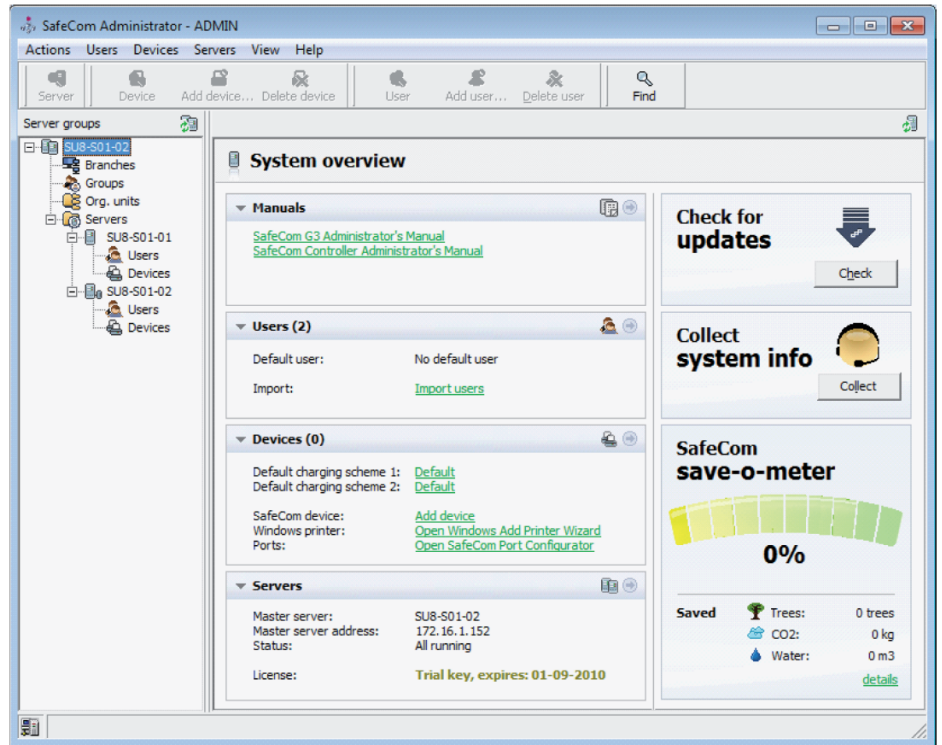


Users log in at the device, and select print, copy, scan, e-mail or fax on the display. If print, a list of the documents saved on the SafeCom Server is presented

## SafeCom Administrator

The SafeCom Administrator allows your IT staff to centrally manage and control the entire printing environment, i.e., its users, printers, and MFPs. This allows your staff to support all the company's print queues, remove cancelled jobs or troubleshoot remote sites from their central location. In addition they can set up rules and policies to reduce waste.

Many operations can be set for automatic processing, such as deletion of old jobs and status reporting. Companies can consolidate their many printer queues, or even create a single queue for all printers, thereby simplifying administration and support and raising helpdesk efficiency.



## Additional SafeCom modules

### Pull Printing

The documents to print are stored temporary on the server and can be printed out on every SafeCom enabled device in the network after the authentication of the user.

### Tracking

Protocols the data of every print, copy, scan, fax and mail. The detailed data is stored in a database and can be analyzed with the reporting module.

### Pay

Streamline your credit-based system of user accounts and guest printing. Ideal for organizations that charge for prints and copies.

### Client Billing

Simply and accurately allocate costs to specified billing codes or accounts to support chargeback or recovery initiatives.

### Rule Based Printing

Automatically enforce your company-wide print policies through a pre-set system of rules – saving you time and money.

### Smart Scan

Securely capture paper documents at MFPs and route them to your desired destination. Less printing equals less waste.

### Supported devices

Most of the actual Lexmark devices are supported by SafeCom. There is a valid device list in the solution area of our website [www.nowcon.com](http://www.nowcon.com).

### Available SafeCom identification technologies

AWID / Barcode / Casi Rusco / Cotag / EM / Felicia / HID / iClass / Indala / IoProx / Legic / Mifare / Nedap / Nexwatch.

## How SafeCom can help your organisation

### Company

- Reduce print costs by 40%
- Protect output and devices
- Reduce waste
- Sustainable print services

### Employees

- Print safely anytime, anywhere
- Go to the printer of your choice
- Free up IT resources
- Centralize administration

### IT

- Simplify print infrastructure
- Improve helpdesk efficiency
- Free up IT resources
- Centralize administration

### Procurement

- Centralize cost control
- Accurate cost allocation
- Optimize print services
- Avoid unauthorized use

**For perfect print and scan solutions ...**



Secure printing & scanning  
Workflow and document management



Fleet management and optimization  
Output management



**www.nowcon.com**