

## Forms- und Font Manager

### Getting the most from your Memory

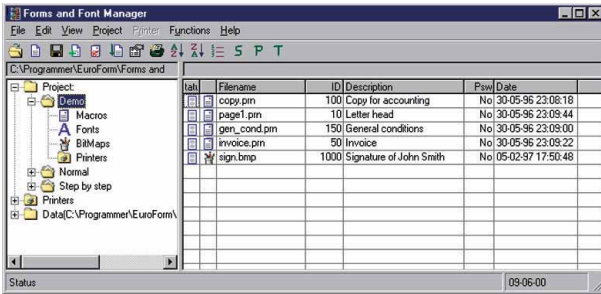
To get the most from your Flash Modul your printer's hard disk, there is no easier tool than the Forms and Font Manager.

You already know the benefits of increased throughput, better document management, reduced costs and enhanced usefulness that non-volatile storage, such as the Flash Memory, means for your printing. But for a complete solution you also need an elegant method for managing this added intelligence in your printer.

The Forms and Font Manager complements your Flash Modul or your built in hard disk, by making it quick and easy to add, update, delete and determine the data stored on your printer.

### How Forms- und Font Manager works

The Forms and Font Manager is a software application that runs under Windows 95, 98 or NT that provides you with a tree structure you can use to build 'projects' on your computer. A project consists of the macros, fonts and bitmaps you want to store on the printer. The Forms and Font Manager also lets you define how these different elements are going to be accessed, and with which local and networked printers they are to be stored and used. When the project is defined, the Forms and Font Manager then looks after downloading the data and commands onto the appropriate printers.



## Features of the Forms and Font Manager

- Store specific or corporate typefaces on the printer for reliable printouts.
- Store bitmaps of logos or even signatures on the printer.
- Store macros containing printer commands and data: particularly useful for the implementation of electronic forms and letterheads, for consistent and immediate use on the printer.
- Complex print jobs, combining data and commands can be constructed out of simple building blocks.
- Drag and drop user interface.
- Password protection can be applied to individual projects to prevent unauthorised interference with sensitive data.
- HEX output is available so the contents of the non-volatile storage can be used from mainframe computers.
- The content of the non-volatile storage can be managed locally or across the network according to the port, IP-address or URL of the printer.
- Test function built-in.

## There are two versions of the Forms and Font Manager

- The ALL version supports
  - Flash Modul
- The FSA version supports
  - HP FlashDIMM
  - Hard Disk.

